



FOOD PROBE - LMS3 SYSTEM DEVELOPMENT

SPECIAL FEATURES

- easy operation
- easy transportation
- radionuclide library
- preset of measurement time (accuracy)
- detection limit of < 8 Bq Cs-137 in 1000 s

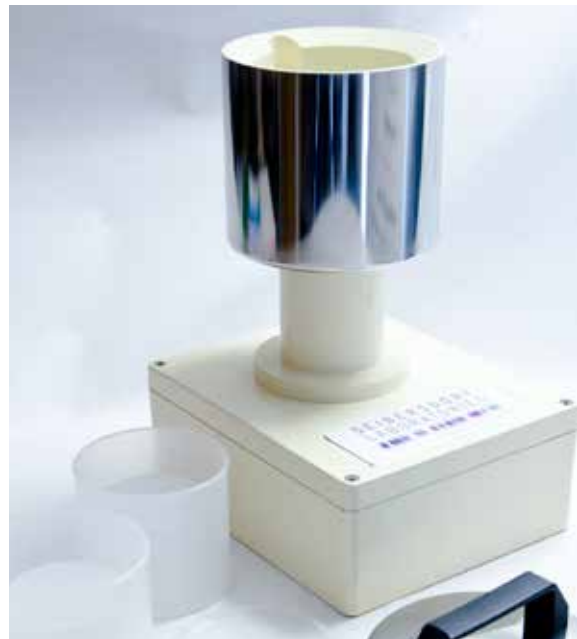
INTENDED APPLICATION

The instrument has to be connected to a desktop PC or a Laptop. The provided software is easy to operate and intended to be used for routine measurement of a large number of samples.

Measurements are documented by recording data such as measurement ID, activity (concentration), date and time. The Instrument is based on a shielded NaI(Tl) detector in Marinelli geometry.

TECHNICAL SPECIFICATIONS

- 0.5 liter Marinelli measurement geometry
- NaI(Tl) detector (other scintillators on request)
- 25 mm lead shielding
- minimum detectable activity concentration < 16 Bq/l Cs-137 in 1000 s measurement time (typical environmental background of 0.1 μ Sv/h)
- battery (Lilon) powered multi channel analyzer with 2000 channels resolution
- weight ~ 33 kg
- manufacturer calibration for Cs-137 (other radionuclides on request)



CONTACT

Seibersdorf Labor GmbH
Radiation Safety and Applications
2444 Seibersdorf, Austria

SECRETARY

Phone: +43(0) 50550 - 2545
Fax: +43(0) 50550 - 2544
E-mail: radiation@seibersdorf-laboratories.at
Web: www.seibersdorf-laboratories.at